

Sunshine Coast Community Strategy

# Action Plan 2024–2029

Our action plan to build a strong community

Easy Read version



## How to use this document



Sunshine Coast Council wrote this document.

When you read the word 'we', it means Sunshine Coast Council.



We wrote this information in an easy to read way.

We use pictures to explain some ideas.

**Bold**  
Not bold

We wrote some important words in **bold**.

This means the letters are thicker and darker.



We explain what these bold words mean.

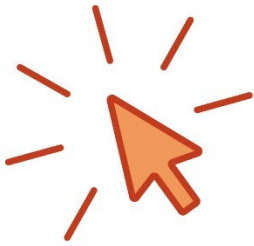
There is a list of these words on page **31**.





This is an Easy Read summary of another document.

This means it only includes the most important ideas.



You can find the other document on our website.

[sunshinecoast.qld.gov.au/communitystrategy](https://sunshinecoast.qld.gov.au/communitystrategy)



You can ask for help to read this document.

A friend, family member or support person may be able to help you.



This is a long document.



You don't need to read it all at once.

You can take your time.

# What's in this document?

What we want for the Sunshine Coast	5
1. Health and wellbeing	7
2. Places in our community	10
3. Ways people travel in our community	12
4. Housing support	14
5. Be more inclusive	16
6. Volunteers	19
7. Support people to have their say	22
8. Build connections in our community	25
9. Keep our community safe	27
10. Support arts and First Nations culture	29
Word list	31
Contact us	33

# What we want for the Sunshine Coast

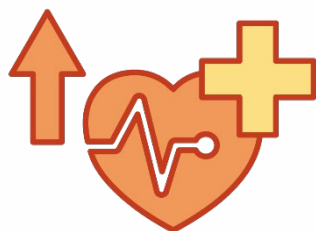


We want to make the Sunshine Coast more **inclusive**.



When something is inclusive, everyone:

- can take part
- feels like they belong.



We want to support people to be more healthy.



We want the Sunshine Coast to have:

- great places for people to meet
- easy ways for people to get around.



We want everyone in the Sunshine Coast to be safe and have a home.



We want to make sure people:

- have friends
- are able to get help when they need it.



We want the Sunshine Coast to be a creative and fun place to live.



Our Community Strategy explains how we will achieve this.

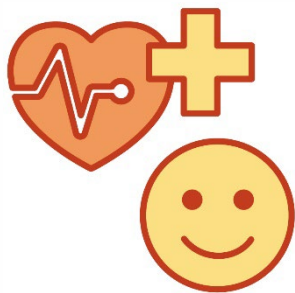


In this document, we call it our Strategy.



This document explains what we will do between **2024** and **2029** to support our Strategy.

# 1. Health and wellbeing



We will grow our health program to include more health and wellbeing activities.

This includes activities that:



- are inclusive



- don't cost a lot of money.



We will help sports clubs use programs that teach them how to be more inclusive.

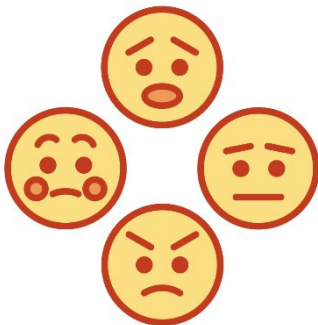
We will help people find and use services that support how they:



- think and feel about themselves



- deal with things in their life

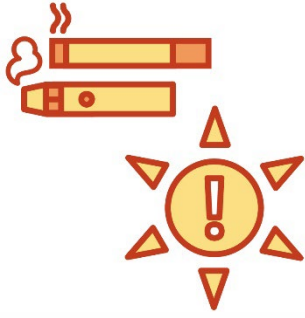


- manage their feelings.



We will share more information and research about health risks.





For example:

- smoking and vaping risks
- skin cancer risks.

We will support programs that encourage

healthy eating, such as:



- community gardens
- growing food at home.



The community also shared some ideas about how they could support health and wellbeing.

For example, the community could:



- grow their own food



- support children to take part in community sports.

## 2. Places in our community



We will help design places to host the Brisbane 2032:

- Olympic Games
- Paralympic Games.



We will make sure these places:

- are inclusive
- support what our community needs.



We will create a plan that explains how people should use community places.

This includes how people can make sure community places:



- are inclusive
- get used more
- support what everyone needs.



We will look into new ways to support more people to use community places.



We will make it easier for people in our community to run their own events.

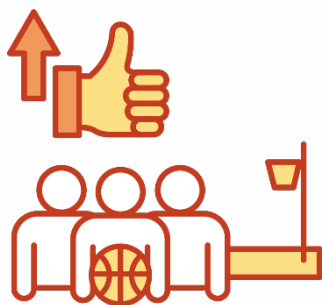


The community also shared some ideas about how they could support our places.

For example, the community could:



- take part in activities at places near their home



- help a local sport club or community group improve their community places.

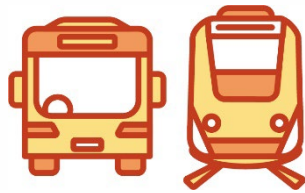
### 3. Ways people travel in our community



We will update our action plan about how we will support people to travel around the Sunshine Coast.



We will keep supporting projects that improve public transport.



When we talk about public transport, we mean:

- buses
- trains.



We will keep supporting projects that help people move around our community.

For example, more footpaths and bike paths.



We will talk to the community about how they can drive their car less.





For example, we can encourage people to:

- walk
- ride
- use public transport.



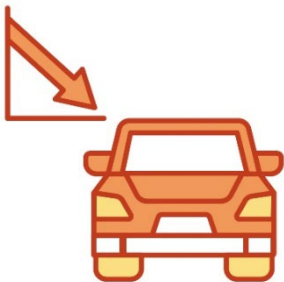
We will work to improve transport services.

This will make it easier for people to travel around the Sunshine Coast.



The community also shared some ideas about how they could support travel in our community.

For example, the community could:



- use their car less when they travel



- be careful when they ride a bike on shared paths.

## 4. Housing support



We will work on our action plan to support people who experience **homelessness**.



People who experience homelessness don't have a home.

They must find a place to sleep each night.



We will keep supporting projects led by the community to help people who experience homelessness.



We will talk to the community about:

- why people don't have a home
- what it's like to experience homelessness.



The community also shared some ideas about how they could support housing.

For example, the community could:



- do work to support people experiencing homelessness



- work together to speak up about funding for **social housing**.



Social housing is a way for the government to provide homes that cost less to live in.

## 5. Be more inclusive



We will work with First Nations people on our action plan to be more inclusive.



This includes the:

- Kabi Kabi peoples
- Jinibara peoples.

We will also work on our plans to support and include:



- young people



- people with disability.





We will work to create a more welcoming community for people who:

- move to the Sunshine Coast from another country
- visit the Sunshine Coast from another country.



We will work with other people to make their events and programs more inclusive to everyone.



We will share stories from the community that show our different people and places.



We will support projects that help organisations and businesses support our community.



The community also shared some ideas about how they could be more inclusive.

For example, the community could:



- treat each other with respect



- learn about people from different backgrounds.

## 6. Volunteers



We will share what people have done to support our community.

This includes **volunteers**.



A volunteer:

- works but doesn't get paid
- does work that helps the community.



We will help train volunteer organisations to improve how they:

- find and keep volunteers
- manage their volunteers.

We will share information about:



- how people in the community can be a volunteer



- what other volunteers have done



- training to be a volunteer.



The community also shared some ideas about how they could be a volunteer.



For example, the community could:



- help a neighbour if they need support



- do volunteer work to support a community group.

## 7. Support people to have their say



We will update our plan that supports our community to have their say.



We will create guides that explain how we can connect better with First Nations peoples and groups.

We will create this guide with advice from First Nations people.



We will deliver a program to support young people to become leaders in the community.



We will improve how we ask for advice from our community.



We will create a guide that explains the best way to work with the community on a project.



We will look into a program to help people have their say on issues important to them.



We will create a plan that supports people to take part in activities for the Brisbane 2032:

- Olympic Games
- Paralympic Games.



The community also shared some ideas about how they could support people to have their say.

For example, the community could:



- look for different opportunities to have their say



- share opportunities with other people in the community so they can have their say.

## 8. Build connections in our community



We will support people to deliver events and activities that help people connect with each other in the community.



We will support people and community organisations to work together to improve our community.



We will also support people and community organisations to share ideas about:

- issues that affect our environment, like fires or floods
- how to manage these issues.



We will keep working on the Disaster Hub.

The Disaster Hub is a website that shares updates about weather issues on the Sunshine Coast.



We will make our **evacuation centres** more inclusive.



An evacuation centre is somewhere people can live for a short time during an **emergency**.

An emergency is a dangerous situation that we didn't expect to happen.



The community also shared some ideas about how they could build connections.

For example, the community could:



- build strong relationships with their neighbours



- take part in local events and activities.



## 9. Keep our community safe



We will tell the community about programs to improve their safety.



We will share information about services and support for people who experience **domestic and family violence**.

Domestic and family violence is when someone close to you hurts you, such as:



- your partner, like your boyfriend or girlfriend
- a member of your family
- someone who takes care of you
- someone you live with.



We will keep sharing information about domestic and family violence.

This includes information about:



- how to stop domestic and family violence



- supports for people who experience domestic and family violence.



The community also shared some ideas about how they could help keep everyone safe.



For example, the community could:

- report a crime to police
- challenge behaviours that are not okay when they see it.

## 10. Support arts and First Nations culture



We will work with First Nations peoples to:

- share information about First Nations history
- respect First Nations way of life.



We will work with:

- Kabi Kabi peoples
- Jinibara peoples.



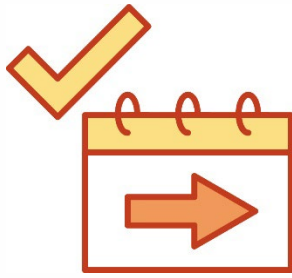
We will work with First Nations peoples to make a plan to support First Nations art.



We will support the work of artists in our community.



We will work with organisations that protect the history of our community.



We will work with these organisations to help them grow and last a long time.



The community also shared some ideas about how they could support arts and First Nations culture.

For example, the community could:



- learn about the Traditional Owners of the land where they were born and live



- go to local arts activities



- go to activities that are part of First Nations culture.

## Word list

This list explains what the **bold** words in this document mean.

### **Domestic and family violence**

Domestic and family violence is when someone close to you hurts you, such as:



- your partner, like your boyfriend or girlfriend
- a member of your family
- someone who takes care of you
- someone you live with.



### **Emergency**

An emergency is a dangerous situation that we didn't expect to happen.



### **Evacuation centres**

An evacuation centre is somewhere people can live for a short time during an emergency.



## Homelessness

People who experience homelessness don't have a home.

They must find a place to sleep each night.



## Inclusive

When something is inclusive, everyone:

- can take part
- feels like they belong.



## Social housing

Social housing is a way for the government to provide homes that cost less to live in.



## Volunteer

A volunteer:

- works but doesn't get paid
- does work that helps the community.



## Contact us



You can contact us if you want more information about our Strategy.



You can call us.

**07 5475 7272**



You can send us an email.

**[engage@sunshinecoast.qld.gov.au](mailto:engage@sunshinecoast.qld.gov.au)**

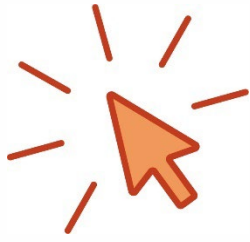


You can write us a letter

**Sunshine Coast Council**

**Locked Bag 72**

**Sunshine Coast Mail Centre QLD 4560**



You can visit our website.

[sunshinecoast.qld.gov.au/communitystrategy](https://sunshinecoast.qld.gov.au/communitystrategy)



The Information Access Group created this Easy Read document using stock photography and custom images.

The images may not be reused without permission.

For any enquiries about the images, please visit

[www.informationaccessgroup.com](http://www.informationaccessgroup.com).

Quote job number 5931.